



CASE: P15-4 159×98×38mm

T-60系列三组输出

接线位置：7位 9.5mm端子

L, N: AC输入 +V2: DC输出正端

⊕: 接大地 -V3: DC输出负端

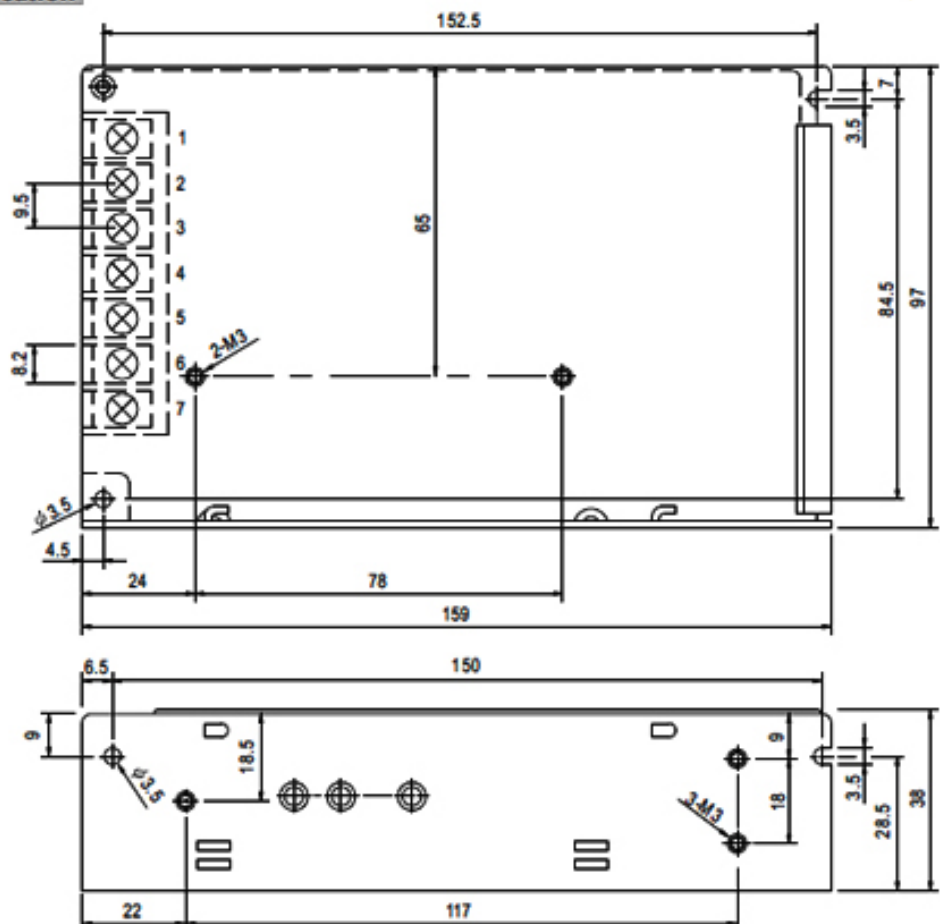
COM: DC输出公用地端

+V1: DC输出正端

输入电压范围 AC input voltage range	88-264VAC 47-63Hz 120-370VDC
输入电流 Input current	2A/115V 1A/230V
冲击电流 AC inrush current	冷启动电流 30A/115V 60A/230V Cold-start current 20A/115V 40A/230V
漏电流 Leakage current	<3.5mA/240VAC
直流电压可调范围 DC adjustable range	额定输出电压的±10% ±10% rated output voltage
过载保护 Over load protection	105-150% 切断输出, 自动恢复 105-150% hiccup mode, auto-recovery
过电压保护 Over-voltage protection	115-135%
启动、上升、保持时间 Setup rise hold up time	300ms 50ms 80ms/230VAC
耐压性 Withstand voltage	I/P-O/P: 3KVAC 1minute I/P-FG: 1.5KVAC 1minute O/P-O/P: 0.5KVAC 1minute
工作温度、湿度 Working temperature	-10 ~ +60 .20%-90% RH
重量/包装 Weight/packing	0.56kg.45pcs/25.2kg

型号type	输出Output	差值Error	范围Range	效率Efficiency
T-60A	5V,0.5-7A	±2%	100mV	72%
	12V,0.2-3.5A	±6%	100mV	
	-5V,0-1A	±6%	100mV	
T-60B	5V,0.5-7A	±2%	100mV	72%
	12V,0.2-3.5A	±6%	100mV	
	-12V,0-1A	±6%	100mV	
T-60C	5V,0.5-7A	±2%	100mV	72%
	15V,0.2-3A	±6%	100mV	
	-15V,0-1A	±6%	100mV	

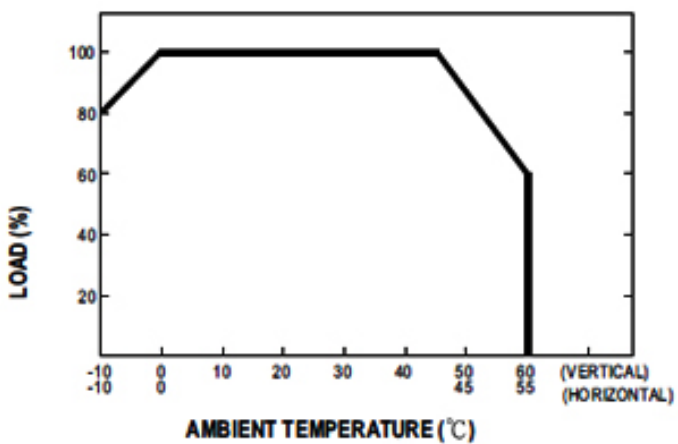
Mechanical Specification



Terminal Pin. No Assignment

Pin No.	Assignment	Pin No.	Assignment	Pin No.	Assignment
1	AC/L	4	DC OUTPUT -V	7	DC OUTPUT +V1
2	AC/N	5	DC OUTPUT +V2		
3	FG \perp	6	DC OUTPUT COM		

Derating Curve



Static Characteristics (24V)

