



CASE: P15-3 129×98×38mm

T-30系列三组输出

接线位置：7位 9.5mm端子

L, N : AC输入 +V2: DC输出正端

⊕ : 接大地

COM : DC输出公用地端

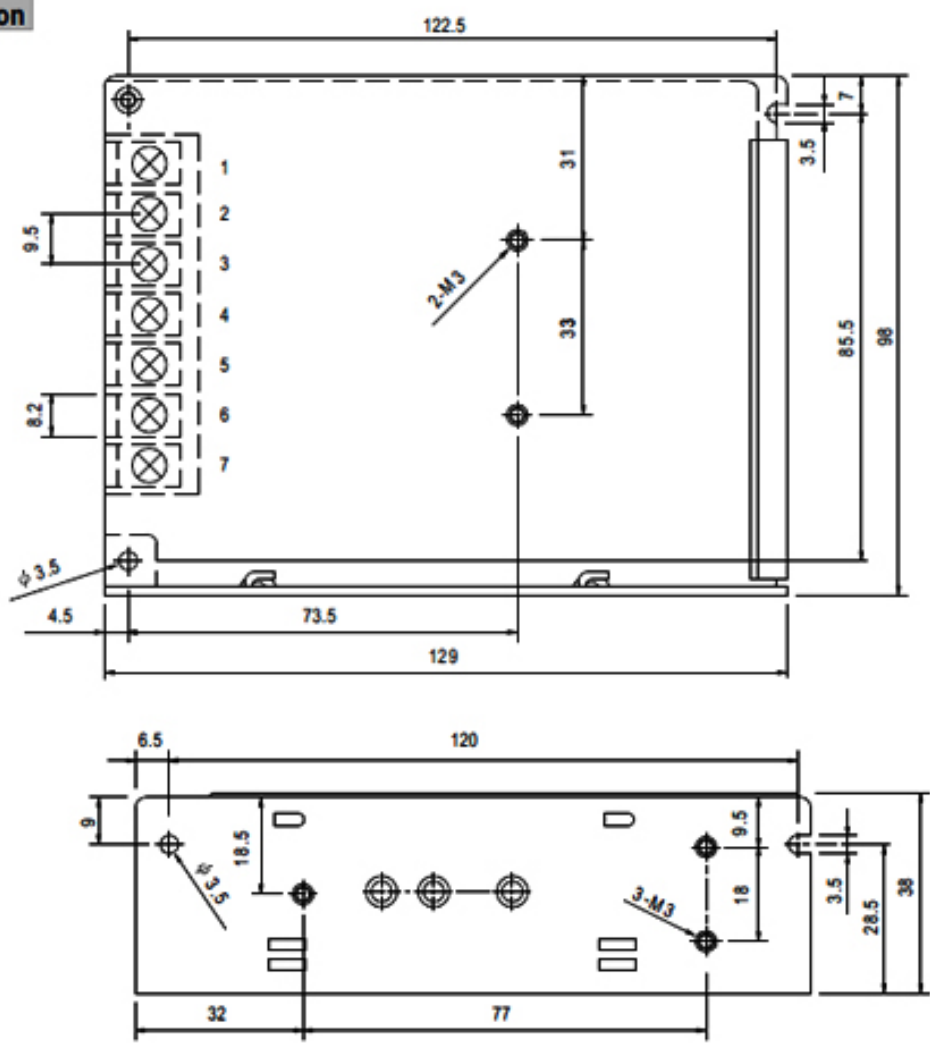
+V1 : DC输出正端

输入电压范围 AC input voltage range	85-132VAC/170-264 47-63Hz 240-370VDC
输入电流 Input current	0.8A/115V 0.45A/230V
冲击电流 AC inrush current	冷启动电流 18A/115V 36A/230V Cold-start current 18A/115V 36A/230V
漏电流 Leakage current	<0.75mA/240VAC
直流电压可调范围 DC adjustable range	额定输出电压的±10% ±10% rated output voltage
过载保护 Over load protection	105-150% 切断输出, 自动恢复 105-150% hiccup mode, auto-recovery
过电压保护 Over-voltage protection	
启动、上升、保持时间 Setup rise hold up time	200ms 100ms 30ms
耐压性 Withstand voltage	I/P-O/P: 1.5KVAC 1minute I/P-FG: 1.5KVAC 1minute O/P-O/P: 0.5KVAC 1minute
工作温度、湿度 Working temperature	-10 ~ +60 .20%-90% RH
重量/包装 Weight/packing	0.4kg.45pcs/18kg

型号type	输出Output	差值Error	范围Range	效率Efficiency
T-30A	5V , 0.5-3A	±2%	50mV	70%
	12V , 0.1-1A	±2-6%	100mV	
	-5V , 0.1-0.5A	±2-10%	50mV	
T-30B	5V , 0.5-3A	±2%	50mV	72%
	12V,0.1-1A	±2-6%	100mV	
	-12V,0.1-0.5A	±6%	100mV	

NOTE:	<p>1. All parameters NOT specially mentioned are measured at 230VAC input, rated load and 25 °C of ambient temperature.</p> <p>2. Ripple & noise are measured at 20MHz of bandwidth by using a 12" twisted pair-wire terminated with a 0.1uf & 47uf parallel capacitor.</p> <p>3. Tolerance : includes set up tolerance, line regulation and load regulation.</p> <p>4. The power supply is considered a component which will be installed into a final equipment. The final equipment must be re-confirmed that it still meets EMC directives.</p> <p>5. If the power supply is short-circuited under no load, it will recover automatically when short-circuit is removed.</p>
-------	------------------------------------------------------------------------------------------------------------------------------------------------------------------------------------------------------------------------------------------------------------------------------------------------------------------------------------------------------------------------------------------------------------------------------------------------------------------------------------------------------------------------------------------------------------------------------------------------------------------------------------------------------------------------------------------

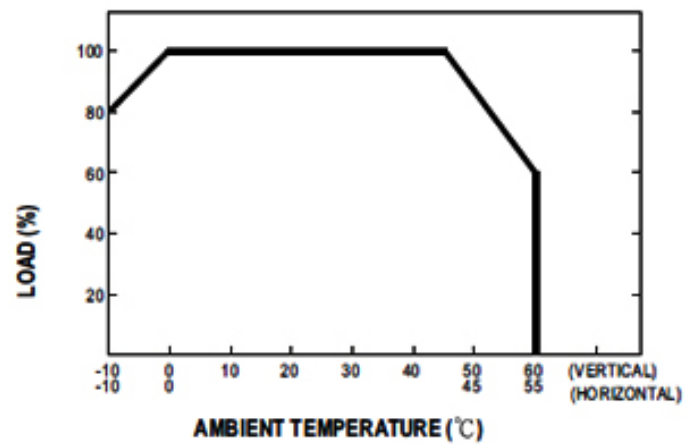
Mechanical Specification



Terminal Pin. No Assignment

Pin No.	Assignment	Pin No.	Assignment	Pin No.	Assignment
1	AC/L	4	DC OUTPUT -V	7	DC OUTPUT +V1
2	AC/N	5	DC OUTPUT +V2		
3	FG \perp	6	DC OUTPUT COM		

Derating Curve



Static Characteristics (24V)

