



CASE:P15-4 159 x 97 x 38mm

Q-60系列四组输出

接线位置：8位 9.5mm端子

L, N : AC输入 +V2: DC输出正端

⊕ : 接大地 -V3: DC输出负端

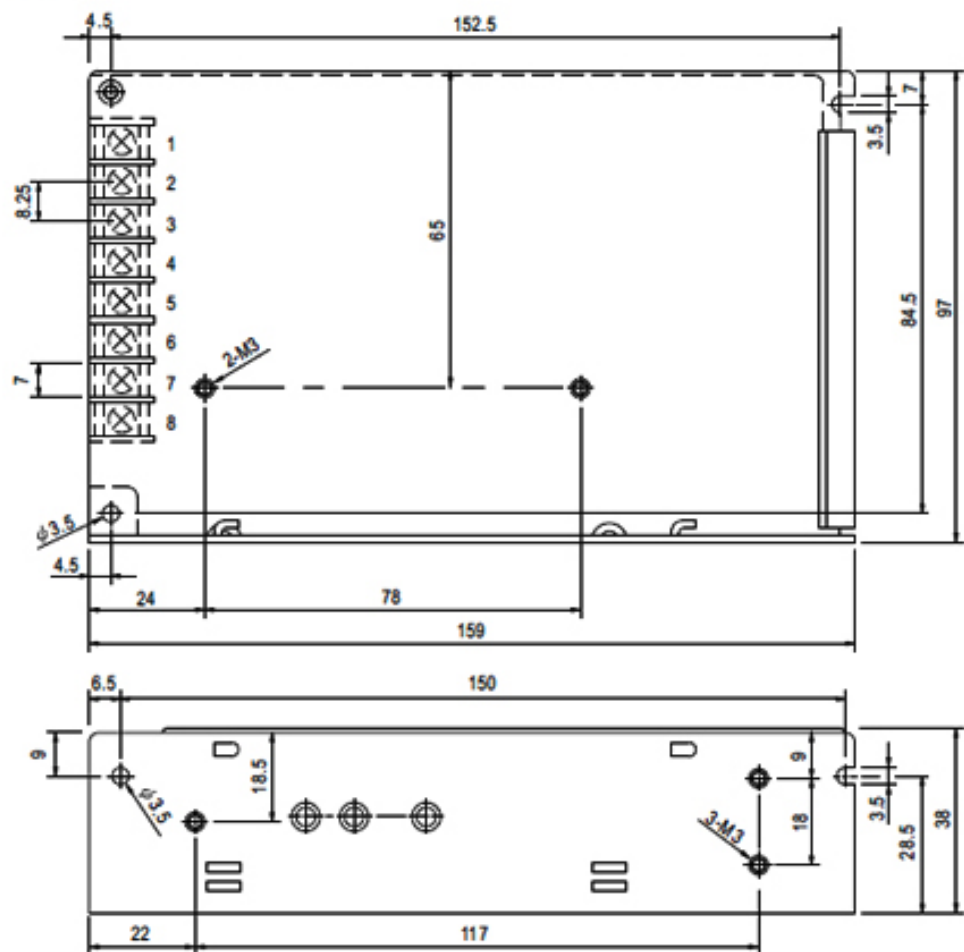
+V1 : DC输出正端 +V4 : DC输出负端

COM : DC输出公用地端

输入电压范围 AC input voltage range	90-264VAC 47-63Hz 120-370VDC
输入电流 Input current	2A/115V 1A/230V
冲击电流 AC inrush current	冷启动电流 18A/115V 36A/230V Cold-start current 18A/115V 36A/230V
漏电流 Leakage current	<1mA/240VAC
直流电压可调范围 DC adjustable range	额定输出电压的±10% ±10% rated output voltage
过载保护 Over load protection	105-135% 切断输出, 自动恢复 105-135% hiccup mode, auto-recovery
过电压保护 Over-voltage protection	115-135%
启动、上升、保持时间 Setup rise hold up time	800ms 20ms 70ms/230VAC
耐压性 Withstand voltage	I/P-O/P: 3KVAC 1minute I/P-FG: 1.5KVAC 1minute O/P-O/P: 0.5KVAC 1minute
工作温度、湿度 Working temperature	-10 ~ +60 .20%-90% RH
重量/包装 Weight/packing	0.56kg.45pcs/25.2kg

型号type	输出Output	差值Error	范围Range	效率Efficiency
Q-60B	5V,0.5-8A	±2%	100mV	70%
	12V,0.1-3A	±6%	120mV	
	-5V,0-1A	±5%	100mV	
	-12V,0-1A	±5%	120mV	
Q-60C	5V,0.5-8A	±2%	100mV	72%
	15V,0.1-3A	±8,4%	120mV	
	-5V,0-1A	±5%	100mV	
	-15V,0-1A	±5%	120mV	
Q-60D	5V,0.5V-8A	±2%	100mV	75%
	12V,0.1-3A	±6%	120mV	
	24V,0.1-1.5A	±8,4%	150mV	
	-12V,0-1A	±5%	120mV	

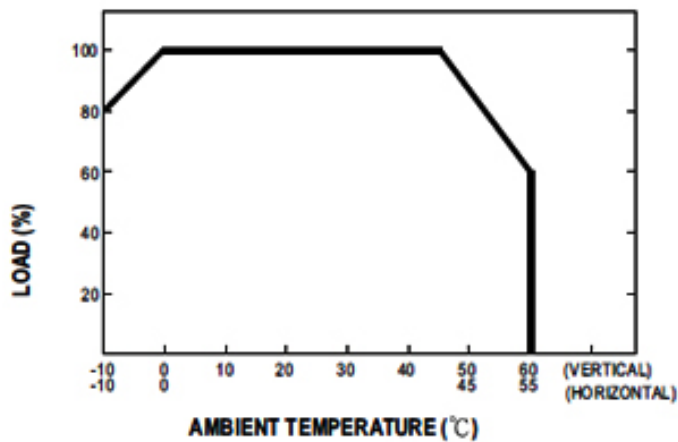
Mechanical Specification



Terminal Pin. No Assignment

Pin No.	Assignment	Pin No.	Assignment	Pin No.	Assignment
1	AC/L	4	DC OUTPUT -V1	7	DC OUTPUT COM
2	AC/N	5	DC OUTPUT -V2	8	DC OUTPUT +V1
3	FG \perp	6	DC OUTPUT +V2		

Derating Curve



Static Characteristics (24V)

