

## MS-120W系列单组输出



CASE: P15-4 159×98×38mm

接线位置：7位 9.5mm端子

L, N : AC输入

⊕ : 接大地

-V : DC输出负端

+V : DC输出正端

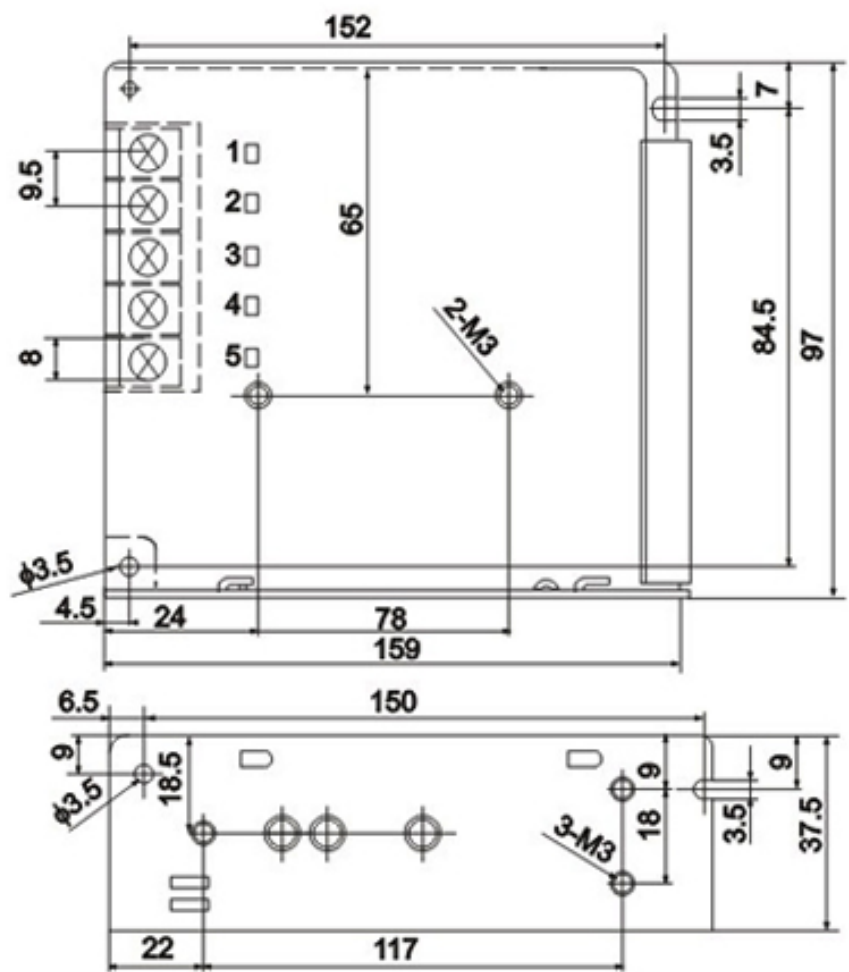
输入电压范围 AC input voltage range	85-132VAC/170-264VAC 47-63Hz 240-370VDC
输入电流 Input current	2.4A/115V 1.2A/230V
冲击电流 AC inrush current	冷启动电流 30A/115V 60A/230V Cold-start current 30A/115V 60A/230V
漏电流 Leakage current	<1mA/240VAC
直流电压可调范围 DC adjustable range	额定输出电压的±10% ±10% rated output voltage
过载保护 Over load protection	105-150% 切断输出, 自动恢复 105-150% hiccup mode, auto-recovery
过电压保护 Over-voltage protection	115-135%
启动、上升、保持时间 Setup rise hold up time	200ms 50ms 20ms
耐压性 Withstand voltage	I/P-O/P: 3KVAC 1minute I/P-FG: 1.5KVAC 1minute O/P-O/P: 0.5KVAC 1minute
工作温度、湿度 Working temperature	-10 ~ +60 .20%-90% RH
重量/包装 Weight/packing	0.45kg.45pcs/20.25kg

型号type	输出Output	差值Error	范围Range	效率Efficiency
MS-120-7.5	7.5V , 0-16A	±1%	100mV	80%
MS-120-12	12V , 0-10A	±1%	100mV	81%
MS-120-15	15V , 0-8A	±1%	100mV	81%
MS-120-24	24V , 0-5A	±1%	100mV	84%
MS-120-27	27V , 0-4.5A	±1%	100mV	84%
MS-120-48	48V , 0-2.5A	±1%	100mV	84%

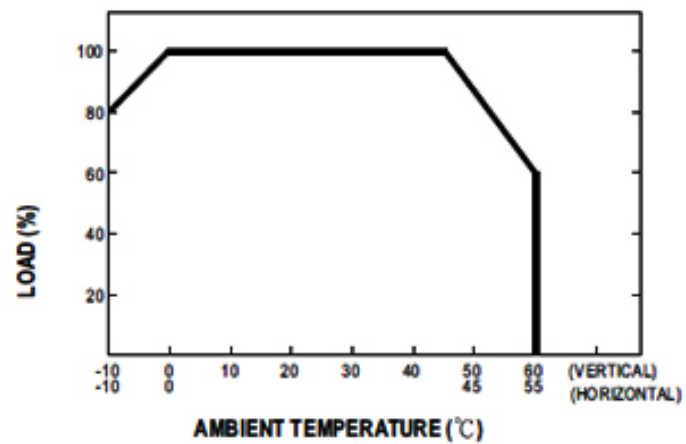
NOTE:

1. All parameters NOT specially mentioned are measured at 230VAC input, rated load and 25 °C of ambient temperature.
2. Ripple & noise are measured at 20MHz of bandwidth by using a 12" twisted pair-wire terminated with a 0.1uf & 47uf parallel capacitor.
3. Tolerance : includes set up tolerance, line regulation and load regulation.
4. The power supply is considered a component which will be installed into a final equipment. The final equipment must be re-confirmed that it still meets EMC directives.
5. If the power supply is short-circuited under no load, it will recover automatically when short-circuit is removed.

**Mechanical Specification**



**Derating Curve**



**Static Characteristics (24V)**

